

## Marlborough Fund of Funds Cells - Consolidated Fact Sheet

### Investment Objectives

March 2019

**Marlborough Defensive (Inc):** The investment objective of the Marlborough Defensive Cell is to achieve capital growth by investing predominately in low risk areas, some of which will be interest producing. The cell is a feeder fund and will aim to achieve its objective by investing in those Marlborough Master Funds predominately investing in Bonds with some limited investment in those Marlborough Master Funds which hold UK and International equities.

**Marlborough Cautious (Inc):** The investment objective of the Marlborough Cautious Cell is to achieve capital growth by investing in low to medium risk areas. The cell is a feeder fund and will aim to achieve its objective by investing in those Marlborough Master Funds investing in Bonds as well as those Marlborough Master Funds which hold UK and International equities.

**Marlborough Balanced (Acc)** The investment objective of the Marlborough Balanced Cell is to achieve capital growth in medium risk areas. The cell is a feeder fund and will aim to achieve its objective by investing in those Marlborough Master Funds predominately investing in UK and International equities with some investment into those Marlborough Master Funds which hold Bonds.

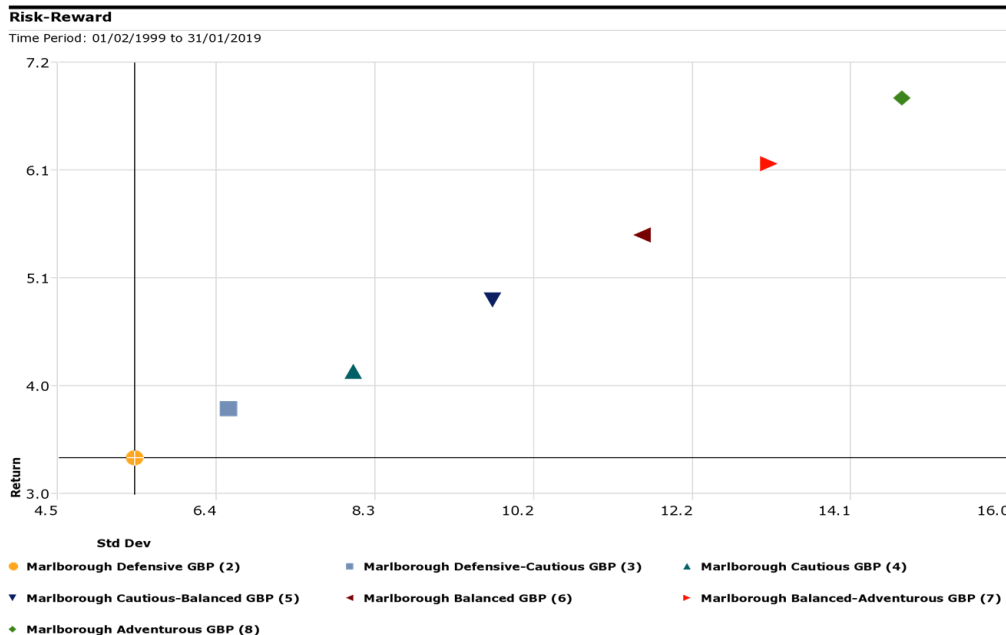
**Marlborough Adventurous (Acc)** The investment objective of the Marlborough Adventurous Cell is to achieve capital growth by investing in medium to higher risk areas. The cell is a feeder fund and will aim to achieve its objective by investing in those Marlborough Master Funds investing in UK and International equities.

### Risk Grades

The Funds of Funds range can be used to target each of the risk grades below. The seven grades range from 2 (low) to 8 (high), and are calibrated to the output from the Marlborough Risk Profile Questionnaire (RPQ). If you prefer to use an alternative RPQ in association with purchasing these funds, please contact your Marlborough sales manager for assistance in risk-matching.

Risk Grade	Risk Profile	Fund(s)	Maximum Equity Weighting
2	Low	100% Defensive	20%
3	Low/Moderate	50% Defensive, 50% Cautious	40%
4	Moderate	100% Cautious	60%
5	Moderate/High	50% Cautious, 50% Balanced	73%
6	Moderate/High	100% Balanced	85%
7	Moderate/High	50% Balanced, 50% Adventurous	93%
8	High	100% Adventurous	100%

Each risk grade has been designed to target a particular risk and return outcome. The asset allocation has been determined based on Investment Association Sector average weightings.



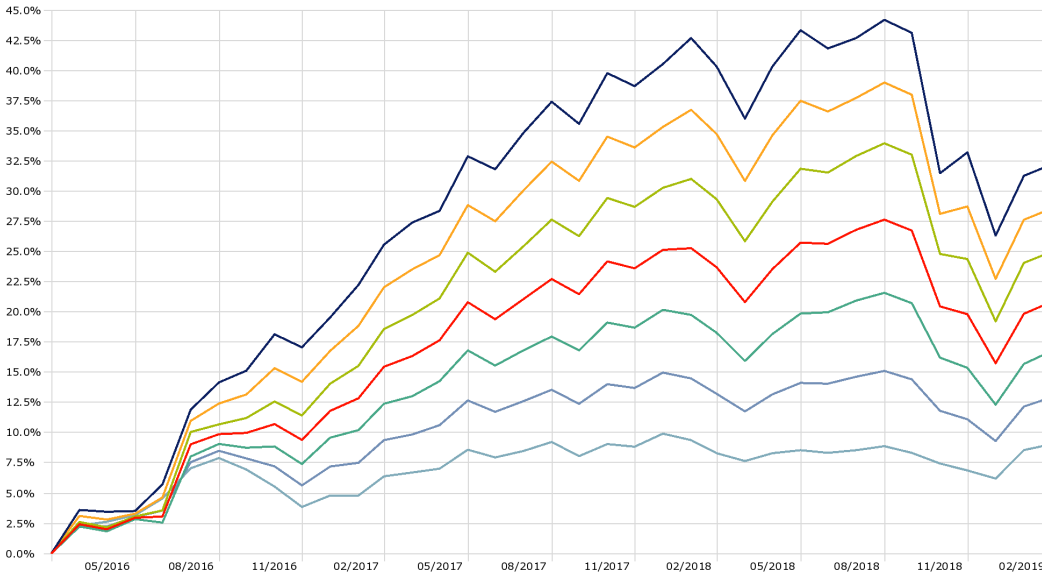
Data source: Morningstar Direct. Return and volatility data over a twenty year period from 01/02/1999 to 31/01/2019.

The return you hope to achieve from your investment is, to a large extent, determined by the risk that you choose to take. Risk is an unavoidable component of investing in stock market linked investments.

## Performance

### Investment Growth

Time Period: 01/03/2016 to 28/02/2019



- Marlborough Adventurous 32.2%
- Marlborough Balanced-Adventurous 28.5%
- Marlborough Balanced 24.9%
- Marlborough Cautious-Balanced 20.8%
- Marlborough Cautious 16.7%
- Marlborough Defensive-Cautious 12.9%
- Marlborough Defensive 9.0%

**Past performance up to and including 30/06/2016 is simulated based on the actual performance of the underlying Master funds, including estimated annual management charges, audit, transaction and custodian fees. Past performance is not a reliable indicator of future performance.**

All performance data relates to P Class shares as at 28/02/2019. Source: Morningstar, bid-bid, GBP, pre-tax. Portfolios rebalanced on a quarterly basis.

Fund / Comparator	% Return	Sharpe	Alpha
<b>Marlborough Defensive</b>	<b>9.03</b>	<b>0.69</b>	<b>-0.39</b>
ARC Sterling Cautious PCI	8.68	0.79	-0.18
GIFS GBP Cautious Allocation	10.89	0.88	-
<b>Marlborough Cautious</b>	<b>16.70</b>	<b>0.82</b>	<b>0.17</b>
ARC Sterling Balanced Asset PCI	15.12	0.92	0.42
GIFS GBP Moderate Allocation	15.23	0.86	-
<b>Marlborough Balanced</b>	<b>24.93</b>	<b>0.93</b>	<b>0.81</b>
ARC Steady Growth PCI	22.75	1.05	1.24
GIFS GBP Aggressive Allocation	22.89	0.86	-
<b>Marlborough Adventurous</b>	<b>32.16</b>	<b>1.02</b>	<b>1.59</b>
ARC Sterling Equity Risk PCI	28.29	1.08	1.77
GIFS GBP Aggressive Allocation	22.89	0.86	-

Time period 01/03/2016 to 28/02/2019. All data relates to P Class shares. Source: Morningstar Direct. Calculation Benchmark: GIFS GBP Cautious Allocation (Defensive fund); GIFS GBP Moderate Allocation (Cautious fund); GIFS Aggressive Allocation (Balanced and Adventurous funds). Risk-free rate is LIBOR 3 months GBP. Portfolios rebalanced on a quarterly basis.

**This information is for Financial Advisers only and should not be relied upon by Retail Investors.** The Fund of Fund Cells referred to are cells of Marlborough International PCC Limited (the 'Company'), a protected cell company incorporated in Guernsey and authorised as a Class B Collective Investment Scheme under the terms of the Protection of Investors (Bailiwick of Guernsey) law, 1987, as amended. Investment may only be made on the basis of the current Prospectus. The following is a summary of some key items in the Prospectus which is available from Marlborough International Management Limited on request or via [www.marlboroughinternational.gg](http://www.marlboroughinternational.gg). Investors in Protected Cell Company (PCC) must have the financial expertise and willingness to accept the risks inherent in this investment. These risks include inter alia, the fact that neither the past performance nor operating history of the Company is a guarantee of future performance. It should be appreciated that the value of Shares is not guaranteed and may go down as well as up and that investors may not receive, on redemption of their Shares, the amount that they originally invested. Investors should consult their professional advisers about the consequences to them, and inform themselves of the legal requirements for, acquiring, holding, exchanging redeeming or disposing of Shares under the relevant laws of the jurisdictions to which they are subject, including any tax consequences, exchange control requirements, requisite governmental or other consents and any other formalities. If you are in any doubt about the action you should take, you should consult a suitably qualified and licensed or authorised professional adviser who specialises in advising on the acquisition of shares and other securities. Investment in the Company should only be undertaken as part of a diversified investment portfolio. Investment in the Shares should be viewed as a medium term investment. Shares may not be redeemed otherwise than on any Dealing Day. The Shares of the Company are not listed on any stock exchange and it is not anticipated that there will be any secondary market in the Shares. The Company's underlying investments may include emerging market, smaller company and commodity funds which may be higher risk than other asset classes. The Company may invest in fixed interest funds which will be impacted by changes in interest rates. Changes in exchange rates may affect the value of the Company's underlying investments. Data accurate as at 28/02/2019.